

PROFILE

OF

EDUCATIONAL SERVICE UNIT 8

Neligh, Nebraska

Randall Peck, Administrator

2011 – 2012

GENERAL INFORMATION

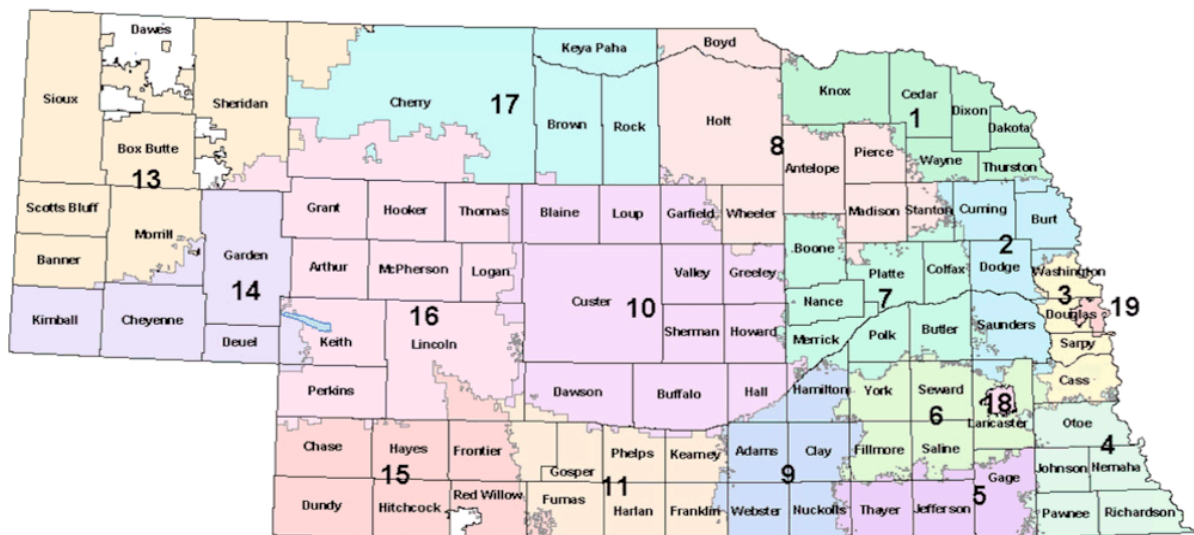
Recognizing inequities which have long produced problems for both children and school districts, the Nebraska Legislature passed a special bill, LB 301, in August of 1965, creating 19 educational service units. Their express purpose, according to that law, was “to provide supplementary educational services to local districts.” The Legislature later realigned unit boundaries into 17 multicounty units, plus units for Omaha and Lincoln for a total of 19 ESUs. Due to consolidation, there are currently 17 ESUs in the state.

As per LB 603, beginning January 1, 2009, ESU election districts were developed based upon 3 factors: substantially equal population, compact and contiguous boundaries. Each ESU is governed by an elected board consisting of 5 to 12 members with one official elected from each election district. The Election district boundaries will need to be redrawn every 10 years based upon census information.

The units are a political subdivision of the State of Nebraska and are partially financed by a tax levy that cannot, by statute, exceed one and one-half cents per \$100 actual valuation for the general fund. Additional funding comes from contracts with local school districts for services provided, state aid for telecomputing and core services, and federal and state grants.

Educational Service Units must adhere to the Nebraska Department of Education *Rule 84 Regulations for Educational Service Units*.

Educational Service Units in Nebraska



The Role and Mission of Educational Service Units

79-1204. ROLE AND MISSION.

(1) The role and mission of the educational service units is to serve as educational service providers in the state's system of elementary and secondary education.

(2) Educational service units shall:

- (a) Act primarily as service agencies in providing core services and services identified and requested by member school districts;
- (b) Provide for economy, efficiency, and cost-effectiveness in the cooperative delivery of educational services;
- (c) Provide educational services through leadership, research, and development in elementary and secondary education;
- (d) Act in a cooperative and supportive role with the State Department of Education and school districts in development and implementation of long-range plans, strategies, and goals for the enhancement of educational opportunities in elementary and secondary education; and
- (e) Serve, when appropriate and as funds become available, as a repository, clearinghouse, and administrator of federal, state, and private funds on behalf of school districts which choose to participate in special programs, projects, or grants in order to enhance the quality of education in Nebraska schools.

(3) Except as provided in section 61 of this act, core services shall be provided by educational service units to all member school districts. Core services shall be defined by each educational service unit as follows:

- (a) Core services shall be within the following service areas in order of priority;
 - (i) Staff development;
 - (ii) technology; and
 - (iii) instructional materials services;
- (b) Core services shall improve teaching and student learning by focusing on enhancing school improvement efforts, meeting statewide requirements, and achieving statewide goals in the state's system of elementary and secondary education;
- (c) Core services shall provide schools with access to services that:
 - (i) The educational service unit and its member school districts have identified as necessary services;
 - (ii) Are difficult, if not impossible, for most individual school districts to effectively and efficiently provide with their own personnel and financial resources;
 - (iii) Can be efficiently provided by each educational service unit to its member school districts;
 - (iv) Can be adequately funded to ensure that the service is provided equitable to the state's public school districts;
- (d) Core services shall be designed so that the effectiveness and efficiency of the service can be evaluated on a statewide basis; and

- (e) Core services shall be provided by the educational service unit in a manner that minimizes the costs of administration or service delivery to member school districts.
- (4) Educational service units shall meet minimum accreditation standards set by the State Board of Education that will:
 - (a) Provide for accountability to taxpayers;
 - (b) Assure that educational service units are assisting and cooperating with school districts to provide for equitable and adequate educational opportunities statewide; and
 - (c) Assure a level of quality in educational programs and services provided to school districts by the educational service units.
- (5) Educational service units may contract to provide services to:
 - (a) Nonmember public school districts;
 - (b) Nonpublic school systems;
 - (c) Other educational service units; and
 - (d) Other political subdivisions, under the Interlocal Cooperation Act.
- (6) Educational service units shall not regulate school districts unless specifically provided pursuant to another section of law. (Laws 1987; 1996; 1997.)

ESU 8 BOARD OF EDUCATION

ESU 8 exists for the purpose of providing supplementary services to children and adults in schools that are served by ESU 8.

This philosophy is a direct reflection of Article 12, Section 79-1204 of Nebraska State Law that dictates the purpose of Nebraska Educational Service Units. Service units were created to provide supplementary services to school districts on a multi-county basis in a way that is more cost effective and efficient, than what school districts could do individually. Basically, we exist to provide services, programs and innovative delivery to the schools we serve.

Election of Board of Directors

Educational Service Unit 8 is under the direction of a 10-member Board of Directors. Board members are elected for terms of four years with the odd numbered election district candidates elected one year and the even numbered election district candidates elected two years later, all of whom reside within the geographical boundaries of the service unit. Members of the Board of Directors receive no compensation for their services, but are reimbursed for actual and necessary expenses incurred in the performance of their duties.

2011 - 2012 EDUCATIONAL SERVICE UNIT 8 BOARD

President, Dan Garner
Vice President, Tim Lambert
Secretary, Jack Prater

Election District	Name	Term Ends
District #1	Craig Brewster	2012
District #2	Tim Lambert	2014
District #3	Dave Sullivan	2012
District #4	Dan Garner	2014
District #5	Glen Leffers	2012
District #6	Bob Chilcoat	2014
District #7	Don Schmidt	2012
District #8	Del Fuelberth	2014
District #9	Jack Prater	2012
District #10	Open	2014
Treasurer	Elleah Wiebelhaus	Appointed Annually
Recording Secretary	Jerry Mundorf	Appointed Annually

Duties and Functions of the Board

The general duties and functions of the Board are as follows:

1. Policies: Adopt policies governing the organization and operation of the ESU that are appropriate to serve the role and mission of ESU 8 and meet requirements of law. The Board policies will be available for review upon request at the administrative office of the ESU or on the ESU 8 website. The Board may act to suspend policies for a specified purpose and limited time by a majority vote of the Board.
2. Personnel: Appoint and fix the compensation and duties of the Administrator and evaluate the Administrator's performance. The method for selecting the Administrator shall be determined by the Board and may include the use of Administrator Selection Services or committee(s) created by the Board for the sole purpose of identifying candidates for the position. With the advice of the Administrator, the Board shall also employ and fix the compensation and duties of professional and classified staff. The Board shall be responsible for taking action on personnel grievances and personnel contracts required pursuant to law or Board policy.
3. Budget: Provide for the preparation and adoption of the annual budget for the operations of the ESU.
4. Services: Exercise final authority with regard to the determination of services to be provided to member school districts and contracted services to be provided to other schools or entities. The Board shall determine the participation of the ESU in providing supplementary educational services.
5. Purchases and Contracts: Approve purchases and contracts for which Board action is required pursuant to law or Board policy.

Legal Reference:	§ 79-1217 to 79-1224 NDE Rule 84, section 3.04F
Date of Adoption:	September 15, 2008

Meeting Times and Places

Board meetings are usually scheduled on the third Monday of each month at 6:00 p.m. in the ESU 8 administrative offices in Neligh. No meeting is held in July. Fall and winter meetings are held in the Learning Centers in Norfolk and O'Neill. The meeting dates and times are subject to change. Members of the public are always welcome to attend. Advance notice is sent to news media with the official publication being in the Neligh News and Leader.

Board Agenda

A copy of the agenda is sent to Board members before the meetings so they can study the materials and come prepared to question, discuss and take action. Board materials are also available to the public at the ESU 8 office and at the meeting itself.

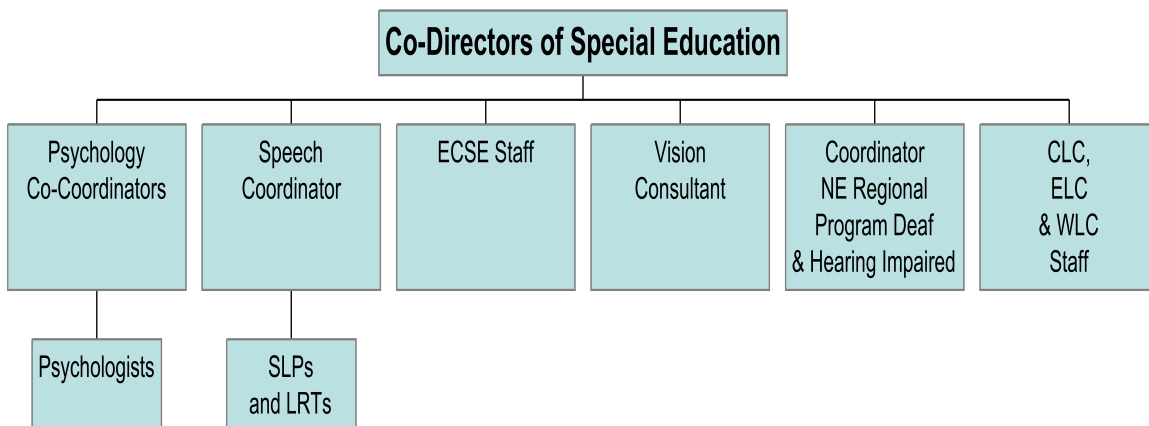
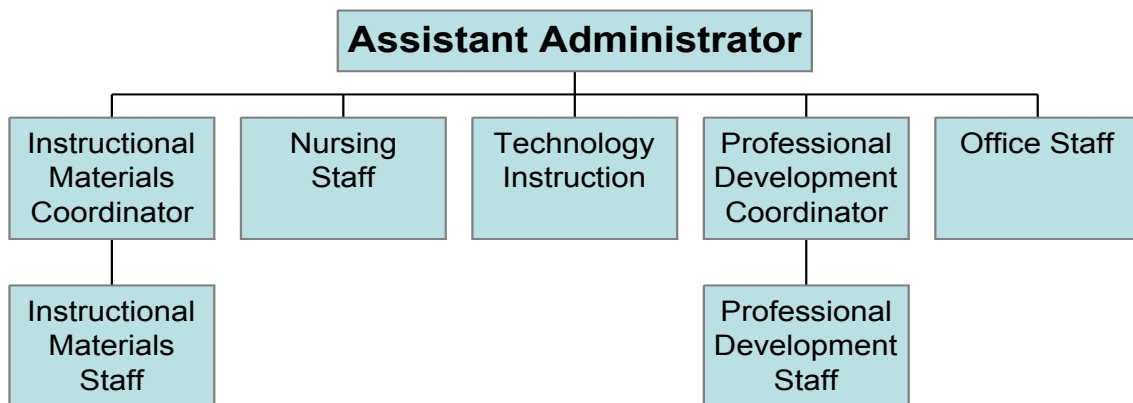
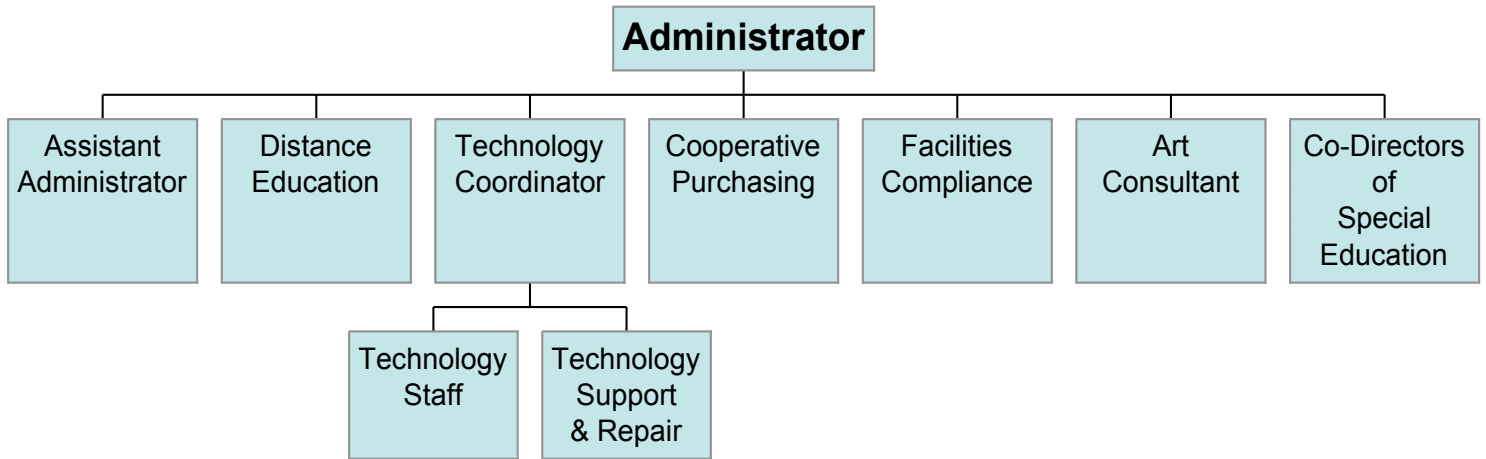
Six Board members must be in attendance to conduct business. The meeting regularly includes recognition of the Open Meetings Law, approval of minutes and bills, a financial report, action and discussion items, and reports from the program directors.

2011-2012 Scheduled Board Meetings

August 15, 2011
September 19, 2011
October 17, 2011
November 21, 2011
December 19, 2011
January 15, 2012

February 20, 2012
March 19, 2012
April 16, 2012
May 21, 2012
June 18, 2012

ESU #8
2011-2012 Organizational Charts



Administrative Assembly

The Administrative Assembly, consisting of all local school superintendents within the ESU 8 boundaries, has been an advisory group to the ESU 8 Administration and Board since the Unit was established in 1968. Since that time, the Administrative Assembly has met at least three times per year.

Meetings provide an opportunity for superintendents to share common concerns, discuss and possibly take action on educational issues that will affect area schools, and to provide a system for sharing information concerning the Nebraska Department of Education policy and State legislation.

Advisory Committee

The ESU 8 Board has established an Advisory Committee composed of representatives of each class of member districts in the ESU. Members are elected annually at the August meeting of the Administrative Assembly. A chairperson is elected to conduct the Advisory Committee meetings.

The main function of the Advisory Committee is to make recommendations to the Administration and Board concerning programs and services offered by ESU 8.

The Advisory Committees of ESU 1 and 8 meet annually in order to plan collaborative efforts between the two ESUs.

2011-12 Advisory Committee Members:

- K-12 Over 1500 students: Marlene Uhing, Norfolk Public Schools
- K-12 Over 350 students: Amy Shane, O'Neill Public Schools; Mike Sieh, Stanton Community Schools; Bill Kuester, Nebraska Unified District #1
- K-12 Under 350 students: Steve Dennis, Elgin Public Schools; Ted Hillman, Ewing and Lynch Public Schools; Herb Pokorny, Newman Grove Public Schools; Robert Hanzlik, Stuart Public Schools
- Non-Public Representative: Betty Getzfred, Pope John XXIII Central Catholic High School

2011-12 Administrative Assembly Meetings:

August 10, 2011
October 25, 2011 – Meeting with ESU 1
January 24, 2012
April 17, 2010

2011-12 Advisory Committee Meetings:

September 9, 2011
February 9, 2012 – Department reviews
Other dates TBD

2012 Administrative Retreat:

May 30-June 1, 2012

CORE SERVICES

HIGHLIGHTS:

- ☐ MSP Mathematics Grant
 - K-6 Elementary Institute
 - 7-12 Nebraska Mathematics Professional Development Series
 - ☐ NNNC Professional Development Collaboration
 - Distance Learning
 - Instructional Materials
 - Technology Instruction
 - Staff Development
 - ☐ Statewide Content Cadres
 - Northeast Nebraska Perkins Consortium
 - 7 Habits of Highly Effective People for K-12 Implementation
 - 21st Century Design Teams
 - Northeast Nebraska Health and Agriculture Career Academies
 - Partnership for Innovation
 - ☐ Principal Mentoring Program
 - ☐ Response to Intervention (RtI)
 - Reading
 - Staff Development
 - ☐ Technology Integration
 - 24/7 Learning
 - Media-On-Demand
 - Podcasts
 - Video Tutorials
 - Webinars
 - ☐ Curriculum Workshops
 - ☐ On-site Consultation and Training
- ### AREAS OF CONTINUED SUPPORT:
- ☐ 8th Grade Career Day
 - ☐ ANGEL Learning Management System
 - ☐ Curriculum, Instruction and Assessment
 - ☐ Career Technical Education
 - Math
 - Reading
 - Writing – *Step Up To Writing*
 - ☐ Data Retreats
 - ☐ Instructional Materials
 - ☐ Leadership
 - ☐ Learning Communities
 - ☐ Nebraska Career Connections
 - ☐ Response to Intervention (RtI)
 - ☐ School Improvement

CORE SERVICES con't

PROGRAM AND CONSORTIA OPPORTUNITIES:

- ☐ Apex Learning
- ☐ Learning Web
- ☐ MAP Consortium
- ☐ NDE/ESU Collaborative Project Grant
- ☐ Northeast Nebraska Perkins Consortium
- ☐ SCIP Grant Consortium
- ☐ System Support Group (PRT #8)
- ☐ Title III LEP Consortium



Gloria Christiansen held a Holistic Scoring and Data Writing workshop at the Service Unit.

ADDITIONAL ESU #8 FACILITIES:

Media Center 212 M Street, Box 89 Neligh, NE 68756 Media8@esu8.org	Eastern Learning Center 300 West Eisenhower P.O. Box 1227 Neligh, NE 68702 402.371.3454
Central Learning Center 402 P Street P.O. Box 89 Neligh, NE 68756 402.887.5559	Western Learning Center 520 East Clay Street P.O. Box 508 O'Neill, NE 68763 402.336.3707

ESU #8 BOARD MEMBERS:

Dan Garner, Osmond, Pres.	Shane Clausen, Norfolk
Tim Lambert, Chambers, V Pres.	Del Fielberth, Norfolk
Jack Prater, Norfolk, Secy.	Glen Leffers, Meadow Grove
Craig Brewster, Butte	Don Schmidt, Norfolk
Bob Chilcoat, Jr., Stanton	Dave Sullivan, Elgin

2009-2010 ANNUAL REPORT



302 Main Street, Box 89
Neligh, NE 68756
402.887.5941
WWW.ESU8.ORG

Randy Peck, Administrator
Jill Bates, Assistant Administrator

This Annual Report is a requirement of the Nebraska Department of Education for accreditation. This report also gives ESU #8 the opportunity to share its current status with several communities.

Located in Neligh, Nebraska, Educational Service Unit #8 is an intermediate agency providing supplementary services to K-12 school districts. ESU #8 services Antelope, Boyd, Holt, Madison, Pierce, Stanton, and Wheeler counties.

Mission Statement: *The mission of Educational Service Unit #8 is to provide educational leadership and services that improve teaching and learning through quality partnerships.*



Polycom session with John Goehrk from the Rock-N-Roll Hall of Fame at the Summer Tech Institute!

SPECIAL EDUCATION

AREAS OF CONTINUED SUPPORT:

- ☐ Early Childhood Special Education
- ☐ Hearing Impaired Services through the Northeast Regional Program
- ☐ Level III Programs for Students Ages 5-21 with Significant Disabilities
- ☐ Psychology: Evaluation and Consultation
- ☐ Special Education Supervision and Consultation
- ☐ Speech/Language Therapy
- ☐ Vision Service: Assessment, Instruction and Consultation

HIGHLIGHTS:

- ☐ Assistive Technology Committee
- ☐ Brain Injury Regional School Support Team
- ☐ ESU #8 Rti Committee
- ☐ ILCD Facilitation
- ☐ Mandt Training
- ☐ Northeast Regional Autism Spectrum Disorders Team
- ☐ Professional Development in Special Education Topics
- ☐ Special Education Survival Skills for New Teachers
- ☐ SRS/NSRS Training



The 2010 Best of Show by Autumn Red-Wing, a 9th Grader at Norfolk Junior High.

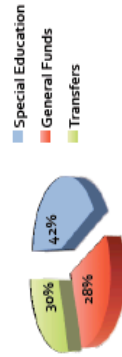
FINANCES

Educational Service Unit #8 budget for 2009-2010 school year:

DISBURSEMENTS:

Special Education	\$4,107,210
General Fund	2,666,606
Transfers	2,893,000
Total	\$9,666,816

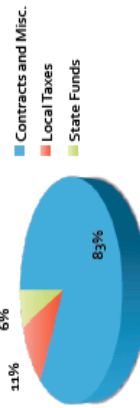
DISBURSEMENTS



REVENUE:

Contracts and Misc.	\$9,047,360
Local Taxes	1,026,000
State Funds	593,456
Total	\$9,666,816

REVENUE



LOCAL TAX LEVY:

- ☐ 1.49 cents per \$100 of assessed evaluation for General Fund
- ☐ Local taxes generated 9.3% of total operating revenue

STUDENT SERVICES

AREAS OF CONTINUED SUPPORT:

- ☐ Art Supply Program
- ☐ Elementary and Secondary Art Shows
- ☐ Junior High/Middle School and High School Academic Quiz Bowls
- ☐ School Nursing Services



Alaska Sealife Center via polycam at the Summer Tech Institute.

TECHNOLOGY

HIGHLIGHTS:

- ☐ Contract Support for Local Area Network and Wide Area Network
- ☐ NNNC Summer Technology Institute
- ☐ NNNC Partnership

AREAS OF CONTINUED SUPPORT:

- ☐ Audio, video, data, and Internet connectivity to:
 - ☐ 97 K-12 schools
 - ☐ Five ESUs
 - ☐ Four community colleges
 - ☐ Wayne State College
- ☐ E-rate training and support
- ☐ Instructional Technology
- ☐ NSRS training and support
- ☐ Technology equipment repair and support

DEPARTMENTS

Core Services: Staff Development, Technology Instruction, Instructional Materials

The purpose of ESU 8 Core Services is to positively impact student achievement by providing educational leadership to staff in area schools. Core services departments include staff development, technology instruction and instructional materials. Coordinators in these departments provide professional development opportunities, follow-up support, and coordinate the sharing of knowledge and skills among educators.

The Core Services Coordinators are responsive to the needs expressed by school districts and focus on the high priority topics as identified in school improvement action plans.

ESU 8 actively pursues, writes and implements grant opportunities to benefit the schools we serve. 2011-12 grants include the statewide MSP Mathematics grant, Perkins IV consortium grant, ELL grant, Learning Web grant, and SCIP grant.

The Nebraska Legislature has further defined services to be offered by stating:

Core services shall be provided by educational service units to all member school districts. The core services shall be within the following service areas in order of priority: (i) staff development; (ii) technology; and (iii) instructional materials services.

Core services shall:

1. Improve teaching and student learning by focusing on enhancing school improvement efforts, meeting statewide requirements, and achieving statewide goals in the state's system of elementary and secondary education.
2. Provide schools with access to services that:
 - a) the ESU and its member school districts have identified as necessary services;
 - b) are difficult, if not impossible, for most individual school districts to effectively and efficiently provide with their own personnel and financial resources;
 - c) can be efficiently provided by each educational service unit to its member school districts;
 - d) can be adequately funded to ensure that the service is provided equitably to the state's public school districts;
 - e) can be designed so that the effectiveness and efficiency of the service can be evaluated on a statewide basis;
 - f) can be provided by the educational service unit in a manner that minimizes the costs of administration of service delivery to member school districts.

Technology: Distance Education and Technology Support

ESU 8 technology provides many services and resources to its constituents. For instance, resources on ESU 8's webpage include access to staff contact information, events and workshops, early childhood planning as well as Parent Institute newsletters. Services to area schools include access to email for 1,200 teachers, spam filtering, podcasting, weblogs, wikis, web-hosting, on-line calendar, media catalog, registration, support for Distance Learning, and access to ANGEL (a learning management system).

ESU 8 maintains the operation of 37 sites from ESU 1, 8 & 17 in the two-way interactive fiber optic teaching and learning network that stretches throughout central Nebraska.

Currently there are approximately 115 two-way interactive and online classes over the Distance Learning network. Many of these classes are dual credit classes with Northeast Community College, Mid Plains Community College, Central Community College, and Nebraska Wesleyan University.

The distance learning network is used by the ESUs for collaboration, meetings, trainings, and as a vital way to save money by saving miles.

Cooperative Purchasing

Cooperative Purchasing for instructional equipment is available through ESU 8. The Coop Purchasing program serves the schools within the geographic boundaries of the Unit. Purchasing has included everything from paper to computers and sports equipment to paper clips. Schools place orders in the spring and shipments arrive throughout the summer at each Service Unit for distribution to local schools.

School Nursing

ESU 8 school nurses believe that healthy children learn better. Eleven experienced RNs provide services that include annual student health assessments, immunization and communicable disease control, and staff training. ESU 8 school nurses will maintain compliance with Nebraska school laws concerning health assessments, physicals, vision evaluations, immunizations, communicable disease control, medication administration, emergency protocol, and self-management of diabetes and asthma/anaphylaxis (Administrative Code, Title 173, Chapter 3; NDE Rule 59, LB 1107 and LB 1148).

Special Education: Level III Programs, Early Childhood, Deaf Education, Vision, Speech, Psychology

ESU #8 provides a variety of Special Education services to member school districts. These services help school districts to meet the requirements of IDEA 2004 and NDE Rule 51.

ESU # 8 operates Level III programs in Norfolk, Neligh, and O'Neill. It is the mission of the ESU #8 Learning Centers to provide an environment in which to meet the diverse educational needs of students with significant disabilities by promoting social/emotional health, vocational skills, functional academic skills, daily living skills, and leisure/recreational skills through classroom and community based learning. Currently, 56 students attend the learning centers on a part time or full time basis. 7 certified teachers and 40 paraprofessionals work in the learning centers. Students also receive speech therapy, occupational therapy, physical therapy, nursing services, deaf education, and/ or vision instruction as identified on their individual education plans (IEP's).

Early Childhood Special Education services are provided for children with disabilities from birth or date of diagnosis to age five. Two early childhood special educators provide instruction to children in their homes, daycare centers, or local preschools in our member districts.

Students in Educational Service Unit #8 receive deaf education services through the Northeast Nebraska Regional Program for the Deaf and Hard of Hearing. The coordinator of the regional program, Jill Hoffart, is an ESU #8 employee.

The ESU #8 vision instructor works with children who are visually impaired or blind. She provides Braille instruction and helps students obtain the materials that they need to access the general curriculum. She also conducts functional vision assessments to determine the educational needs of each child from birth to 21.

The speech department consists of 15 speech-language pathologists and two language resource teachers who work with students who have disabilities in the areas of speech articulation, language, stuttering, and voice. Our speech staff has a lot of longevity. Finding new speech therapists to replace those who retire is always a challenge. We have begun to have speech therapists attend health career fairs to encourage high school students to consider speech therapy as a career choice. We also contact college students from the area who are enrolled in graduate programs at UNL and UNK. When we are in need of new or additional speech therapists, we advertise in the Omaha World Herald, on the Husker Hire website, and on the Teach Nebraska website. We also contact adjoining ESU's to see if they have any potential applicants.

Our 6 ESU #8 school psychologists provide a variety services to ESU #8 member school districts including formal and informal evaluation, observations, and consultation in relation to educational and behavioral issues. They also provide support to districts in the Response to Intervention process by assisting with benchmark assessments, data analysis, participating in weekly grade level meetings, and supporting teachers in the implementation of reading interventions.

Unique Trainings

ESU 8 provides several training opportunities for administrators and non-certified staff. Trainings include MANDT, asbestos care and removal, CPR, dispensing of medications, budget workshops, e-rate, and principal mentorship. Requests for additional trainings may be made by contacting the ESU 8 office.

Policy Development, Legislation, and Policy Services

ESU 8 assists schools with their policy development by participating in a statewide partnership that allows ESUs to purchase sample policies from the Perry Law firm. The Perry Law firm updates policies at least annually to include new state and federal mandates. This is a service provided by ESU 8 at no cost to member schools. Workshops are periodically provided to school board members and administrators to assist them with legislative changes and/or case law that might affect their school districts.

**NEBRASKA DEPARTMENT OF EDUCATION
DIRECTORY SEARCH RESULTS**

[Back to Search Results](#)

[New Search](#)

Co-Dist	Name	School Name	Total Students	City
59-0005-001	BATTLE CREEK PUBLIC SCHOOLS	BATTLE CREEK HIGH SCHOOL	246	BATTLE CREEK
59-0005-002	BATTLE CREEK PUBLIC SCHOOLS	BATTLE CREEK ELEMENTARY SCHOOL	217	BATTLE CREEK
45-0137-001	CHAMBERS PUBLIC SCHOOLS	CHAMBERS HIGH SCHOOL	86	CHAMBERS
45-0137-002	CHAMBERS PUBLIC SCHOOLS	CHAMBERS ELEMENTARY SCHOOL	58	CHAMBERS
59-0706-001	CHRIST LUTHERAN ELEM SCHOOL	CHRIST LUTHERAN ELEM SCHOOL	330	NORFOLK
02-0018-001	ELGIN PUBLIC SCHOOLS	ELGIN HIGH SCHOOL	75	ELGIN
02-0018-002	ELGIN PUBLIC SCHOOLS	ELGIN ELEMENTARY SCHOOL	98	ELGIN
59-0080-001	ELKHORN VALLEY SCHOOLS	ELKHORN VALLEY HIGH SCHOOL	97	TILDEN
59-0080-002	ELKHORN VALLEY SCHOOLS	ELKHORN VALLEY ELEMENTARY SCH	197	TILDEN
45-0029-001	EWING PUBLIC SCHOOLS	EWING HIGH SCHOOL	51	EWING
45-0029-002	EWING PUBLIC SCHOOLS	EWING ELEMENTARY SCHOOL	69	EWING
70-0703-001	IMMANUEL LUTHERAN ELEM SCH	IMMANUEL LUTHERAN ELEM SCH	24	HADAR
59-0712-001	KEYSTONE CHRISTIAN ACADEMY	KEYSTONE CHRISTIAN ELEMENTARY	29	NORFOLK
59-0712-002	KEYSTONE CHRISTIAN ACADEMY	KEYSTONE CHRISTIAN JR HIGH SCH	7	NORFOLK
59-0714-001	LUTHERAN HIGH NORTHEAST	LUTHERAN HIGH NORTHEAST	143	NORFOLK
08-0036-001	LYNCH PUBLIC SCHOOLS	LYNCH SECONDARY SCHOOL	57	LYNCH
08-0036-002	LYNCH PUBLIC SCHOOLS	LYNCH ELEMENTARY SCHOOL	43	LYNCH
59-0001-001	MADISON PUBLIC SCHOOLS	MADISON SENIOR HIGH SCHOOL	174	MADISON
59-0001-002	MADISON PUBLIC SCHOOLS	MADISON ELEMENTARY SCHOOL	198	MADISON
59-0001-003	MADISON PUBLIC SCHOOLS	MADISON MIDDLE SCHOOL	118	MADISON
02-2001-001	NEBRASKA UNIFIED DISTRICT 1	CLEARWATER HIGH SCHOOL	70	ROYAL
02-2001-002	NEBRASKA UNIFIED DISTRICT 1	CLEARWATER ELEMENTARY SCHOOL	132	ROYAL
02-2001-003	NEBRASKA UNIFIED DISTRICT 1	ORCHARD HIGH SCHOOL	65	ROYAL
02-2001-004	NEBRASKA UNIFIED DISTRICT 1	ORCHARD ELEMENTARY SCHOOL	52	ROYAL
02-2001-005	NEBRASKA UNIFIED DISTRICT 1	VERDIGRE HIGH SCHOOL	89	ROYAL
02-2001-006	NEBRASKA UNIFIED DISTRICT 1	VERDIGRE ELEMENTARY SCHOOL	77	ROYAL
02-0009-001	NELIGH-OAKDALE SCHOOLS	NELIGH-OAKDALE JR/SR HIGH SCH	181	NELIGH
02-0009-002	NELIGH-OAKDALE SCHOOLS	ELEM SCHOOL AT NELIGH-OAKDALE	248	NELIGH
59-0013-001	NEWMAN GROVE PUBLIC SCHOOLS	NEWMAN GROVE HIGH SCHOOL	101	NEWMAN GROVE
59-0013-002	NEWMAN GROVE PUBLIC SCHOOLS	NEWMAN GROVE ELEMENTARY SCHOOL	117	NEWMAN GROVE
59-0704-001	NORFOLK CATHOLIC SCHOOLS	NORFOLK CATHOLIC HIGH SCHOOL	304	NORFOLK
59-0704-002	NORFOLK CATHOLIC SCHOOLS	SACRED HEART ELEMENTARY	413	NORFOLK
59-0002-001	NORFOLK PUBLIC SCHOOLS	NORFOLK SENIOR HIGH SCHOOL	1225	NORFOLK
59-0002-002	NORFOLK PUBLIC SCHOOLS	NORFOLK JR HIGH SCHOOL	594	NORFOLK
59-0002-003	NORFOLK PUBLIC SCHOOLS	GRANT ELEMENTARY SCHOOL	205	NORFOLK
59-0002-004	NORFOLK PUBLIC SCHOOLS	JEFFERSON ELEMENTARY SCHOOL	256	NORFOLK
59-0002-005	NORFOLK PUBLIC SCHOOLS	LINCOLN ELEMENTARY SCHOOL	224	NORFOLK
59-0002-008	NORFOLK PUBLIC SCHOOLS	WASHINGTON ELEMENTARY SCHOOL	238	NORFOLK
59-0002-009	NORFOLK PUBLIC SCHOOLS	WESTSIDE ELEMENTARY SCHOOL	242	NORFOLK
59-0002-010	NORFOLK PUBLIC SCHOOLS	BEL AIR ELEMENTARY SCHOOL	257	NORFOLK
59-0002-012	NORFOLK PUBLIC SCHOOLS	WOODLAND PARK ELEMENTARY SCH	227	NORFOLK
59-0002-014	NORFOLK PUBLIC SCHOOLS	NORFOLK MIDDLE SCHOOL	553	NORFOLK
59-0002-016	NORFOLK PUBLIC SCHOOLS	ALTERNATIVES FOR SUCCESS SCH	0	NORFOLK
45-0007-001	O'NEILL PUBLIC SCHOOLS	O'NEILL HIGH SCHOOL	358	O'NEILL
45-0007-002	O'NEILL PUBLIC SCHOOLS	O'NEILL ELEMENTARY SCHOOL	399	O'NEILL
45-0007-010	O'NEILL PUBLIC SCHOOLS	LUCKY LEARNERS PRESCHOOL	32	O'NEILL
70-0542-001	OSMOND PUBLIC SCHOOLS	OSMOND HIGH SCHOOL	123	OSMOND
70-0542-002	OSMOND PUBLIC SCHOOLS	OSMOND ELEMENTARY SCHOOL	121	OSMOND
59-0709-001	PARK AVENUE CHRISTIAN SCHOOLS	PARK AVENUE CHRISTIAN ELEM	19	NORFOLK
59-0709-002	PARK AVENUE CHRISTIAN SCHOOLS	PARK AVENUE CHRISTIAN JR HIGH	11	NORFOLK
70-0002-001	PIERCE PUBLIC SCHOOLS	PIERCE JR/SR HIGH SCHOOL	341	PIERCE
70-0002-002	PIERCE PUBLIC SCHOOLS	PIERCE ELEMENTARY SCHOOL	345	PIERCE
70-0005-001	PLAINVIEW PUBLIC SCHOOLS	PLAINVIEW SECONDARY SCHOOL	177	PLAINVIEW
70-0005-002	PLAINVIEW PUBLIC SCHOOLS	PLAINVIEW ELEMENTARY SCHOOL	186	PLAINVIEW
02-0702-001	POPE JOHN XXIII HIGH SCHOOL	POPE JOHN XXIII HIGH SCHOOL	91	ELGIN
02-0701-001	ST BONIFACE ELEMENTARY SCHOOL	ST BONIFACE ELEMENTARY SCHOOL	64	ELGIN
59-0708-001	ST JOHN LUTHERAN ELEM SCHOOL	ST JOHN LUTHERAN ELEM SCHOOL	124	BATTLE CREEK
45-0703-001	ST JOSEPH'S ELEMENTARY SCHOOL	ST JOSEPH'S ELEMENTARY SCHOOL	46	ATKINSON
59-0702-001	ST LEONARD'S ELEMENTARY SCHOOL	ST LEONARD'S ELEMENTARY SCHOOL	59	MADISON
70-0705-001	ST MARY ELEMENTARY SCHOOL	ST MARY ELEMENTARY SCHOOL	23	OSMOND
45-0701-001	ST MARY'S SCHOOLS	ST MARY'S HIGH SCHOOL	116	O'NEILL
45-0701-002	ST MARY'S SCHOOLS	ST MARY'S ELEMENTARY SCHOOL	107	O'NEILL
59-0707-001	ST PAUL LUTHERAN ELEM SCHOOL	ST PAUL LUTHERAN ELEM SCHOOL	73	NORFOLK
84-0003-001	STANTON COMMUNITY SCHOOLS	STANTON HIGH SCHOOL	218	STANTON

84-0003-002 STANTON COMMUNITY SCHOOLS	STANTON ELEMENTARY SCHOOL	248	STANTON
45-0044-001 STUART PUBLIC SCHOOLS	STUART HIGH SCHOOL	74	STUART
45-0044-002 STUART PUBLIC SCHOOLS	STUART ELEMENTARY SCHOOL	105	STUART
59-0703-001 TRINITY LUTHERAN ELEM SCHOOL	TRINITY LUTHERAN ELEM SCHOOL	57	MADISON
08-0050-001 WEST BOYD SCHOOL DISTRICT	WEST BOYD HIGH SCHOOL	77	SPENCER
08-0050-002 WEST BOYD SCHOOL DISTRICT	WEST BOYD MIDDLE SCHOOL	57	SPENCER
08-0050-003 WEST BOYD SCHOOL DISTRICT	WEST BOYD ELEMENTARY SCHOOL	109	SPENCER
45-0239-001 WEST HOLT PUBLIC SCHOOLS	WEST HOLT HIGH SCHOOL	188	ATKINSON
45-0239-002 WEST HOLT PUBLIC SCHOOLS	ATKINSON ELEMENTARY SCHOOL	157	ATKINSON
45-0239-003 WEST HOLT PUBLIC SCHOOLS	UNION ELEMENTARY SCHOOL	8	ATKINSON
45-0239-005 WEST HOLT PUBLIC SCHOOLS	CLOVER COVE ELEMENTARY SCHOOL	3	ATKINSON
92-0045-001 WHEELER CENTRAL SCHOOLS	WHEELER CENTRAL HIGH	56	BARTLETT
92-0045-002 WHEELER CENTRAL SCHOOLS	WHEELER CENTRAL ELEMENTARY #45	55	BARTLETT
70-0701-001 ZION LUTHERAN ELEMENTARY SCH	ZION LUTHERAN ELEMENTARY SCH	80	PIERCE
70-0702-001 ZION LUTHERAN ELEMENTARY SCH	ZION LUTHERAN ELEMENTARY SCH	46	PLAINVIEW

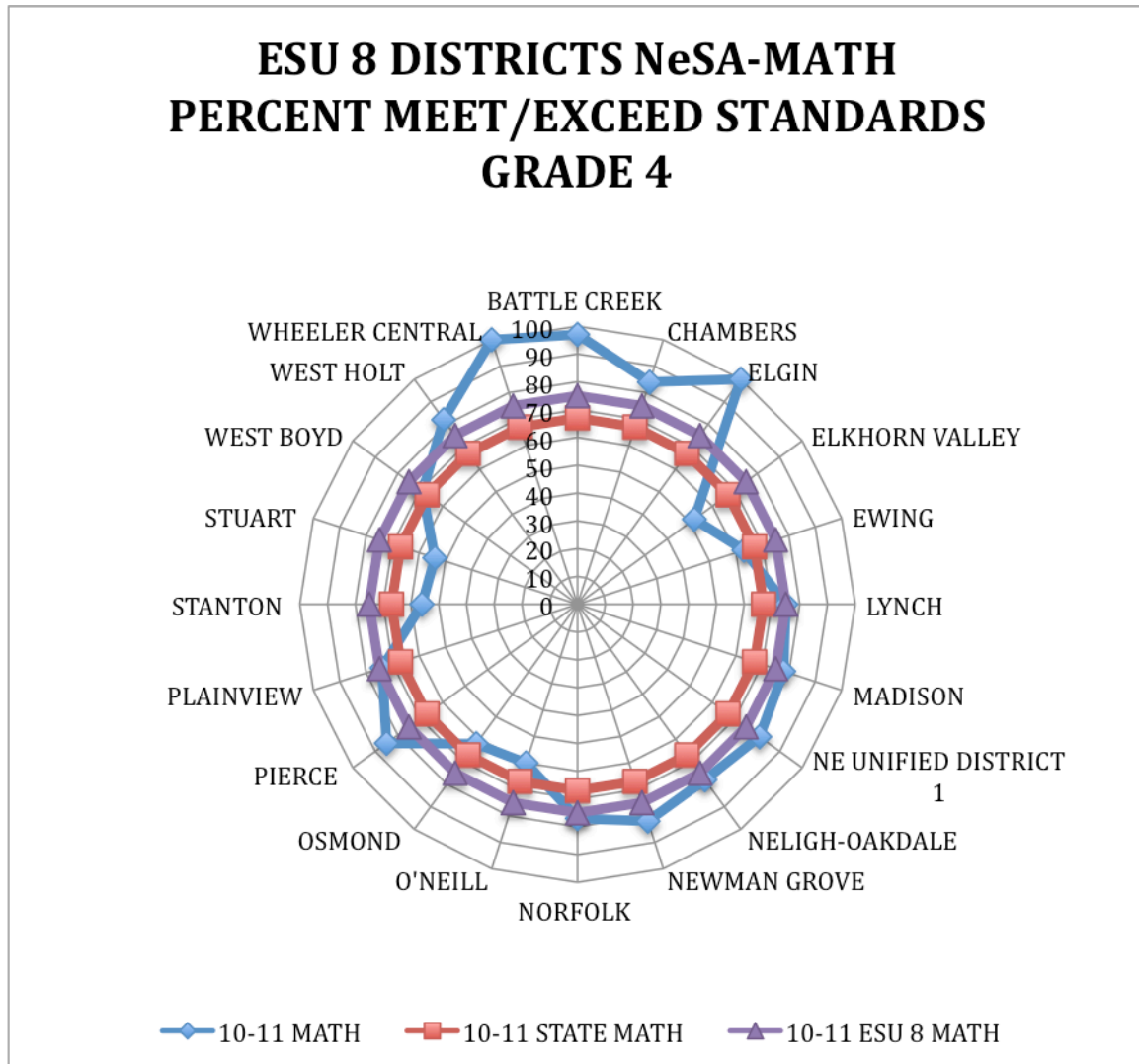
2010 Census Redistricting Data (Public Law 94-171) Summary File

Geographic area	Total population	Housing units		
		Total	Occupied	Vacant
Nebraska	1,826,341	796,793	721,130	75,663
Battle Creek	2,573	1,059	991	68
Chambers Public	717	397	322	75
Elgin Public	1,332	681	573	108
Elkhorn Valley	1,987	951	848	103
Ewing Public	773	382	317	65
Lynch Public	593	562	285	277
Madison Public	3,548	1,272	1,178	94
Nebraska Unified	3,131	1,549	1,271	278
Neligh-Oakdale	2,536	1,260	1,103	157
Newman Grove	1,406	683	593	90
Norfolk Public	29,772	12,814	11,983	831
O'Neill Public	5,389	2,614	2,294	320
Osmond Public	1,356	605	530	75
Pierce Public	3,747	1,546	1,457	89
Plainview Public	2,199	1,099	941	158
Stanton	2,455	1,125	1,008	117
Stuart Public	864	399	351	48
West Boyd Public	1,637	958	721	237
West Holt Public	2,484	1,280	1,062	218
Wheeler Central	772	566	336	230

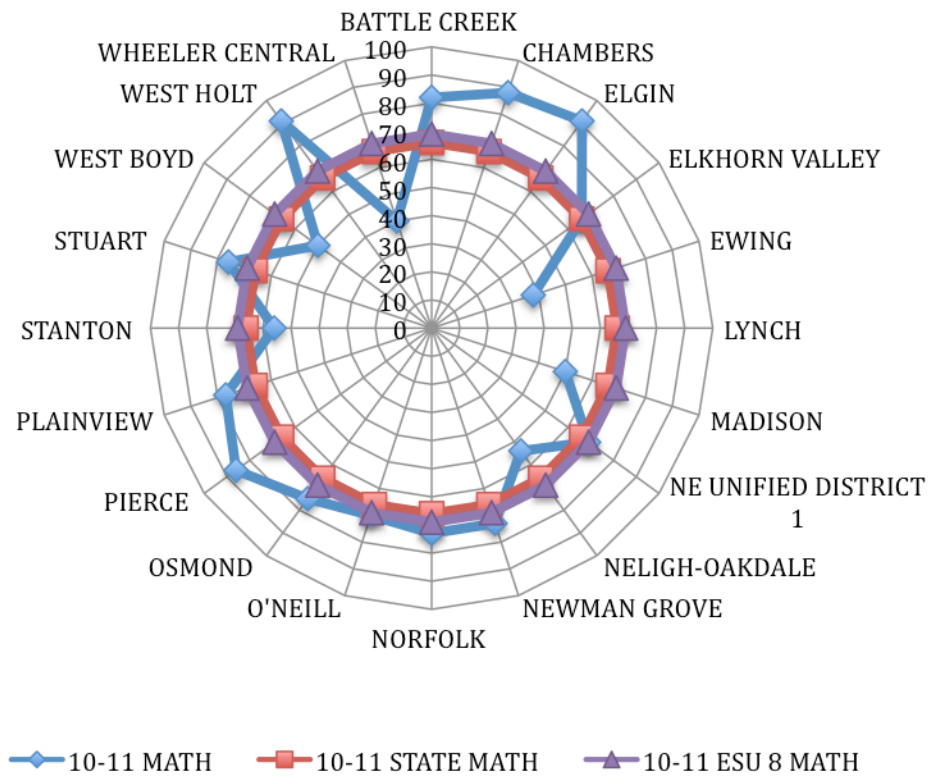
Source: U.S. Census Bureau, 2010 Census.
 2010 Census Redistricting Data (Public Law 94-171) Summary File, Tables P1 and H1

NeSA statewide reading and mathematics tests were administered in the spring of 2011 in grades three through eight and at the eleventh grade. The tests measure the newly revised Nebraska state reading and mathematics standards and determine Nebraska student proficiency on those standards. The NeSA-R was initiated in the spring of 2010.

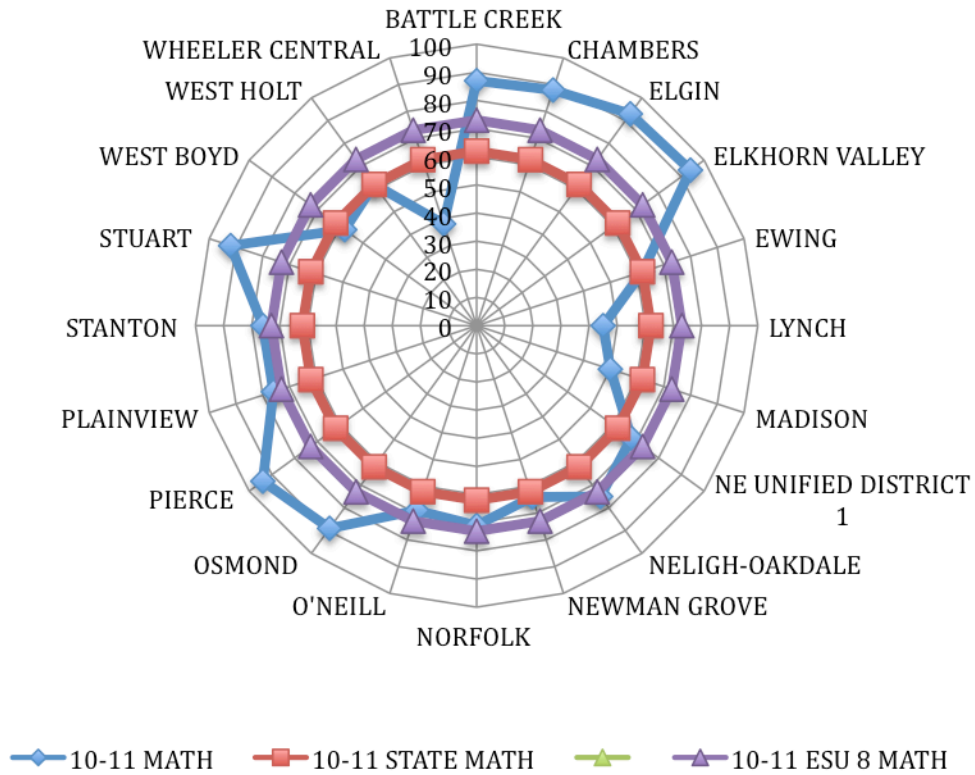
The following charts show how the students in grades 3-8 and 11 performed in Reading and Mathematics in the 20 public school districts served by ESU 8.



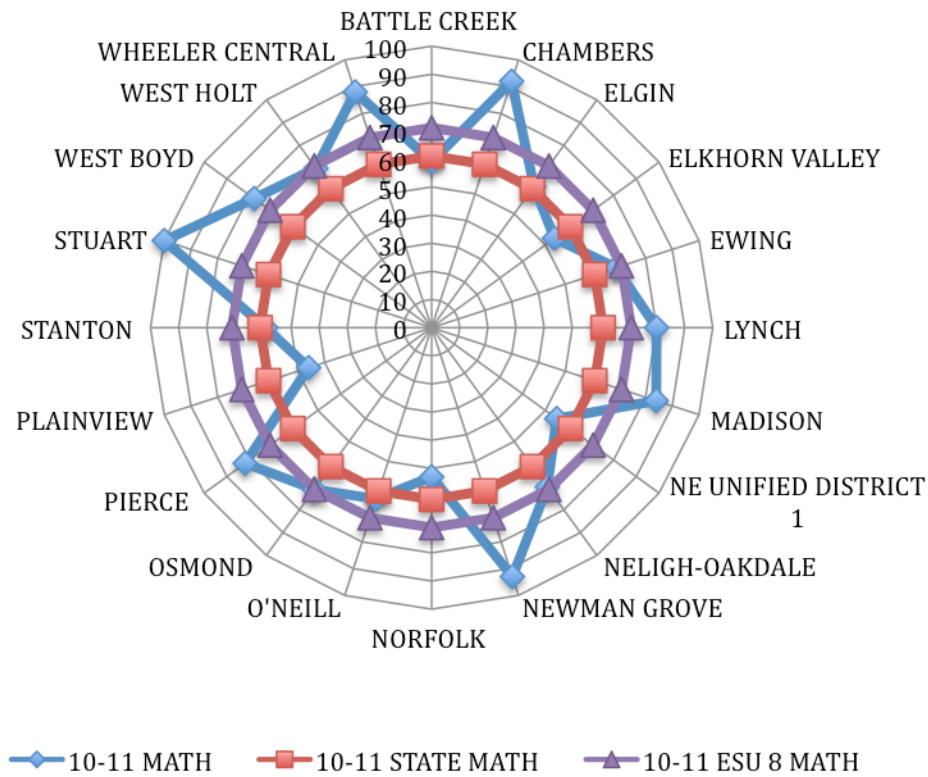
ESU 8 DISTRICTS NeSA-MATH PERCENT MEET/EXCEED STANDARDS GRADE 5



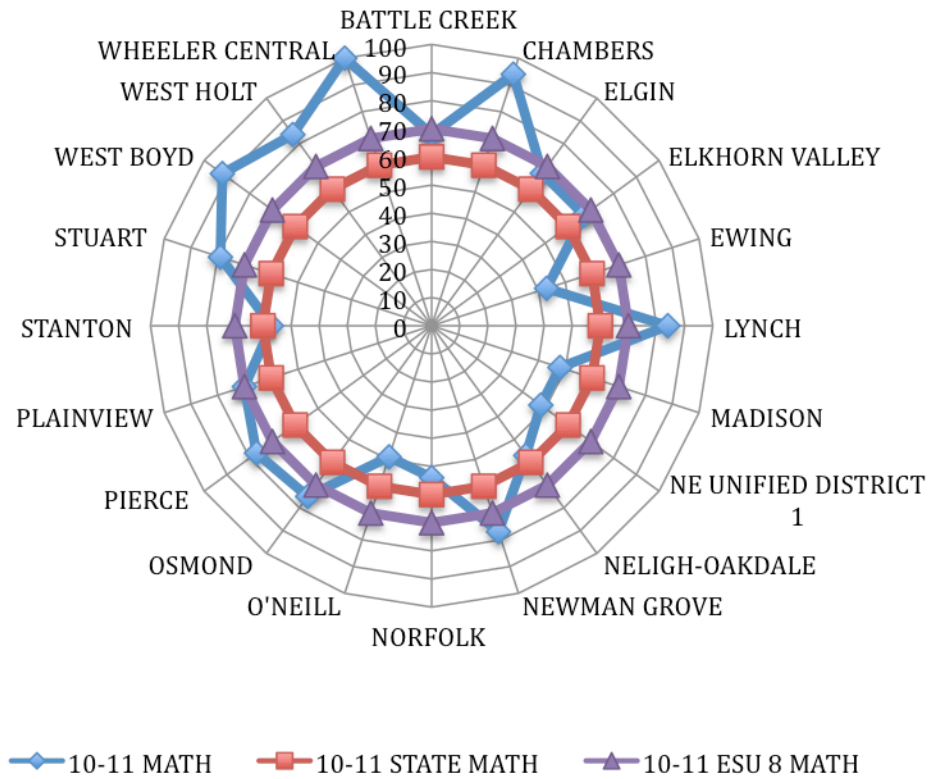
ESU 8 DISTRICTS NeSA-MATH PERCENT MEET/EXCEED STANDARDS GRADE 6



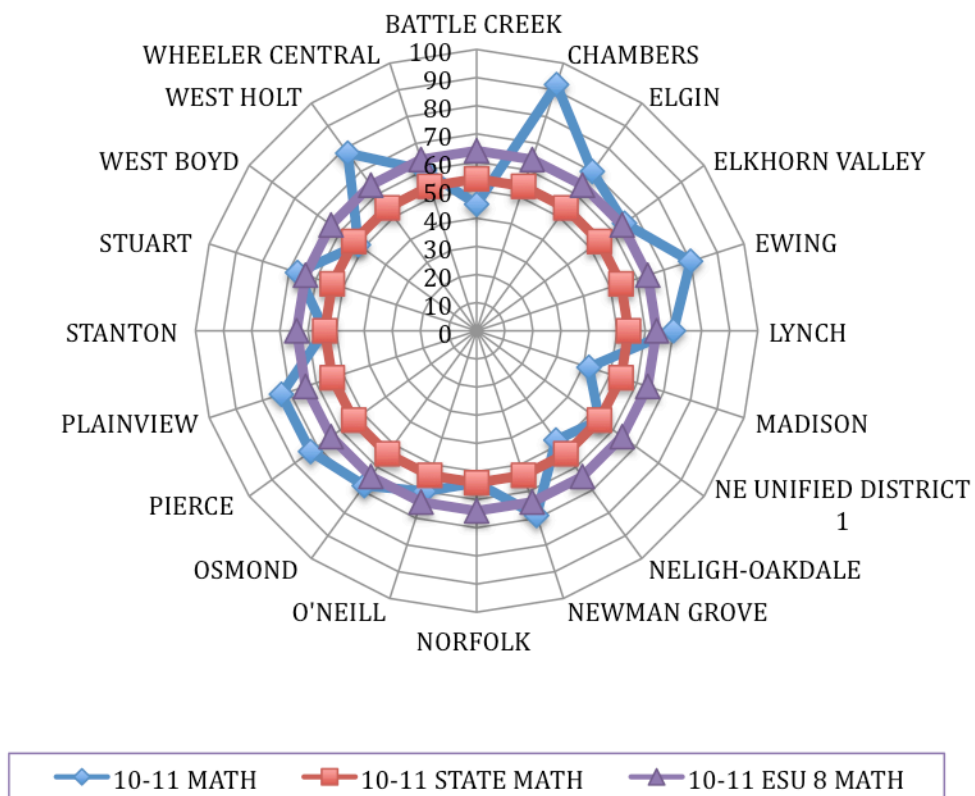
ESU 8 DISTRICTS NeSA-MATH PERCENT MEET/EXCEED STANDARDS GRADE 7



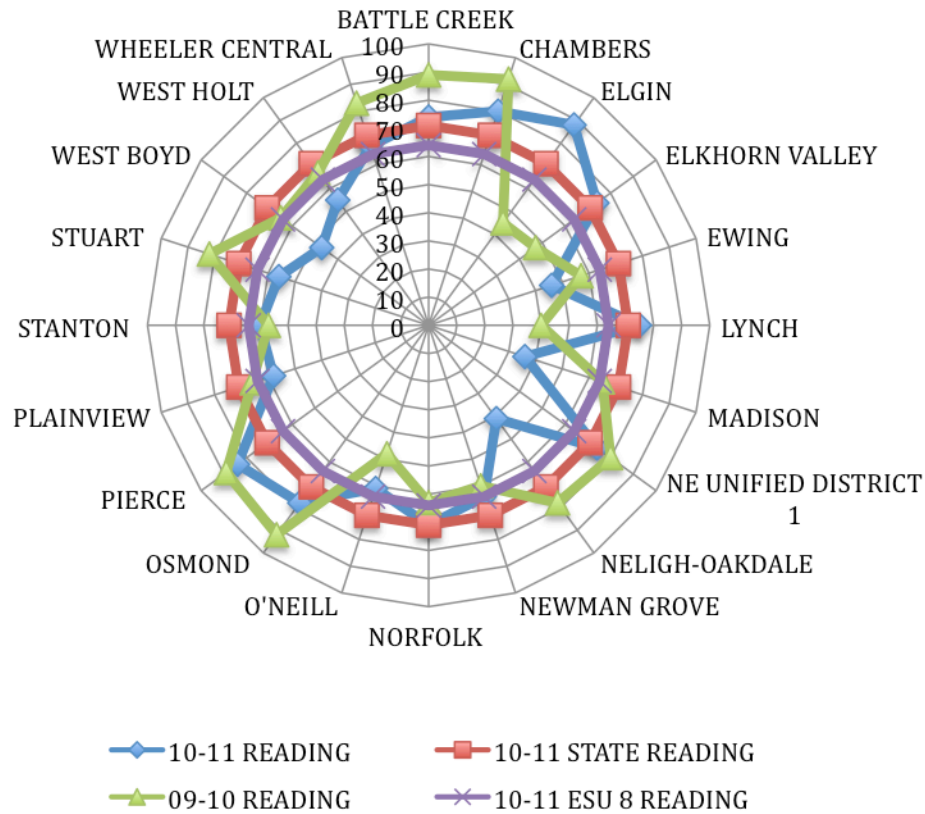
ESU 8 DISTRICTS NeSA-MATH PERCENT MEET/EXCEED STANDARDS GRADE 8



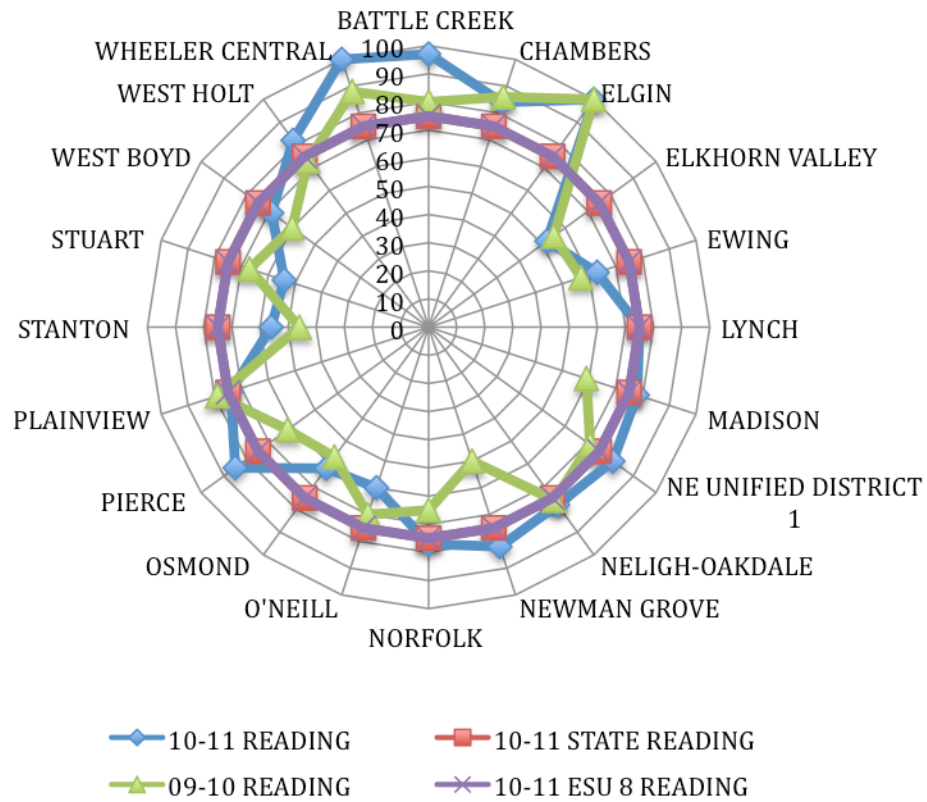
ESU 8 DISTRICTS NeSA-MATH PERCENT MEET/EXCEED STANDARDS GRADE 11



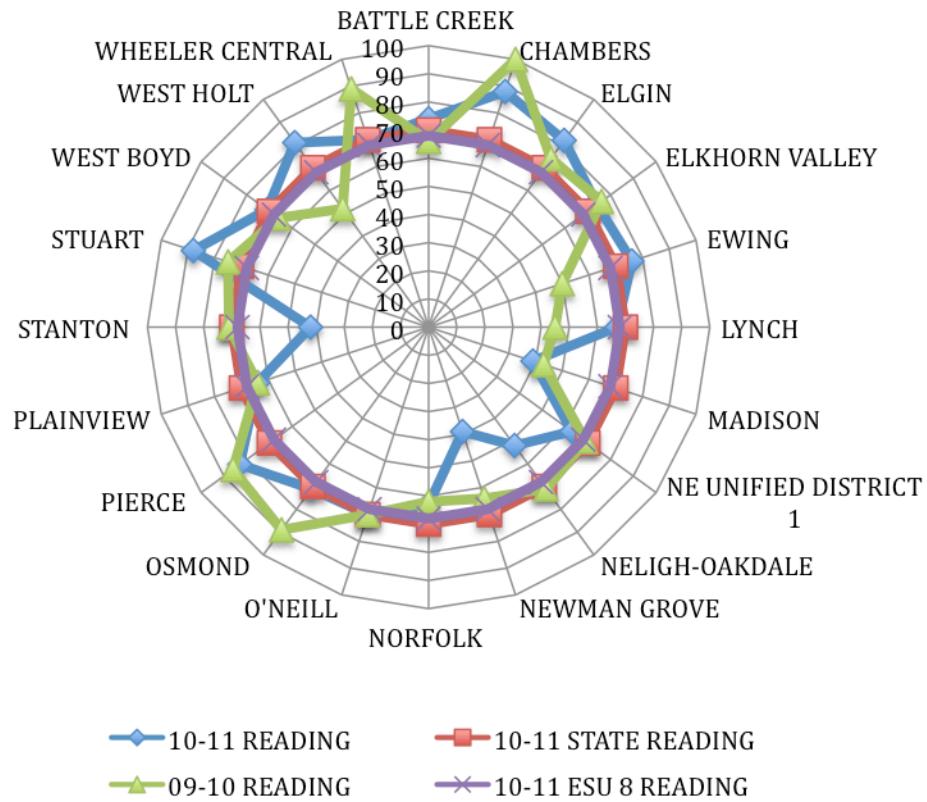
ESU 8 DISTRICTS NeSA-READING PERCENT MEET/EXCEED STANDARDS GRADE 3



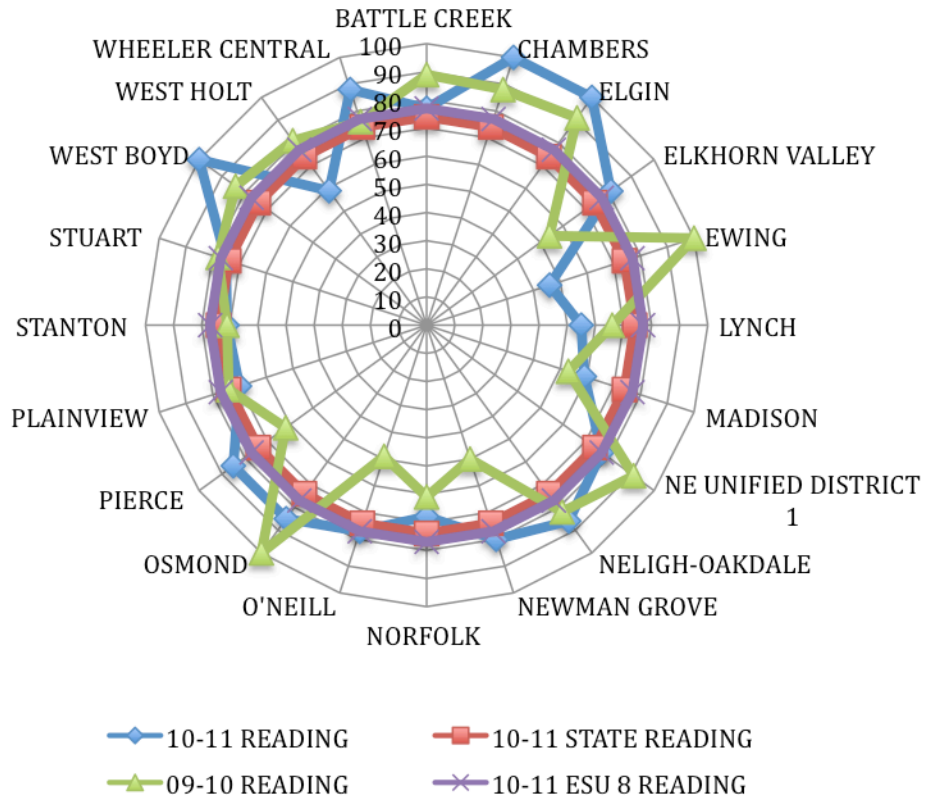
ESU 8 DISTRICTS NeSA-READING PERCENT MEET/EXCEED STANDARDS GRADE 4



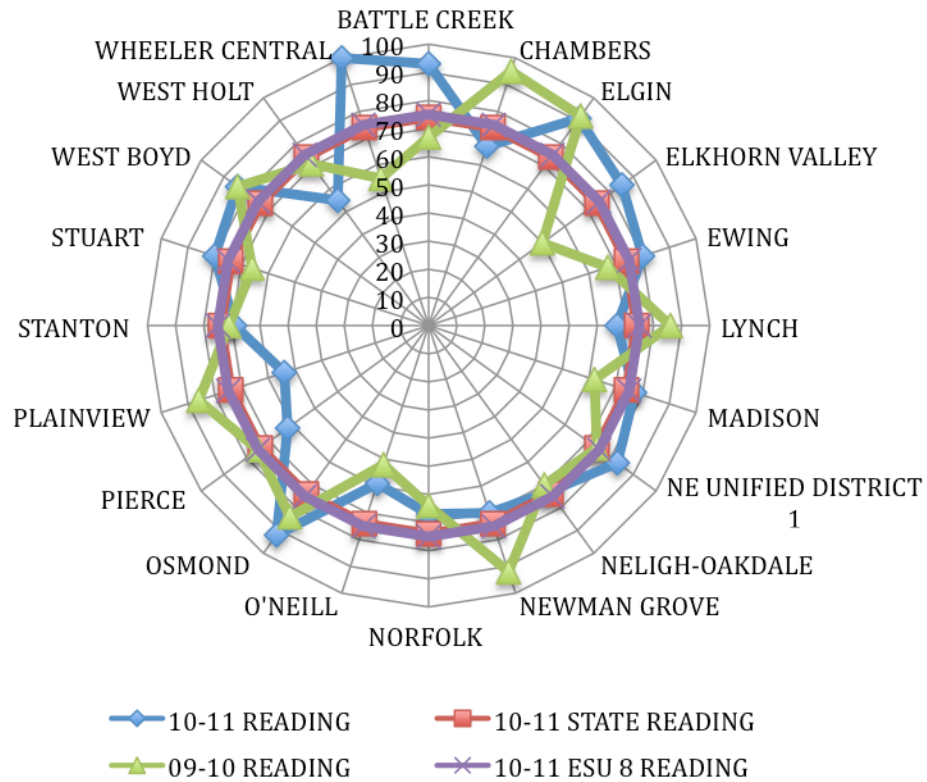
ESU 8 DISTRICTS NeSA-READING PERCENT MEET/EXCEED STANDARDS GRADE 5



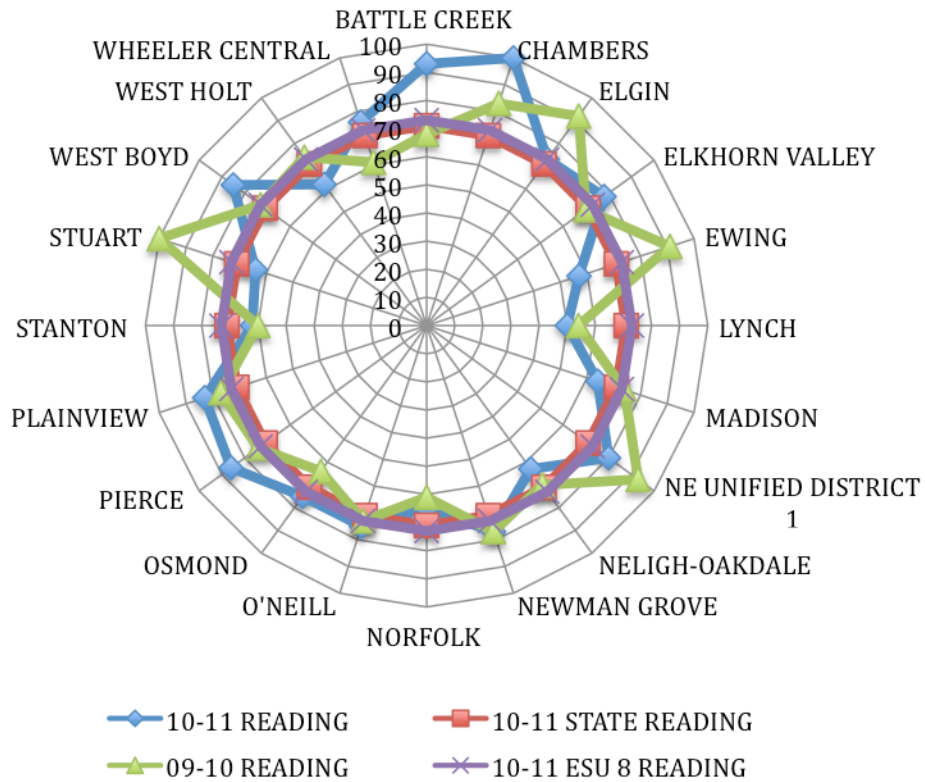
ESU 8 DISTRICTS NeSA-READING PERCENT MEET/EXCEED STANDARDS GRADE 6



ESU 8 DISTRICTS NeSA-READING PERCENT MEET/EXCEED STANDARDS GRADE 7



ESU 8 DISTRICTS NeSA-READING PERCENT MEET/EXCEED STANDARDS GRADE 8



ESU 8 DISTRICTS NeSA-READING PERCENT MEET/EXCEED STANDARDS GRADE 11

